

WAVE TO SMAF Converter

# WSC-MA2

Users Manual Ver 2.0.0



## <Contents>

### **Introduction** ----- About WSC-MA2      4

1. Outline of WSC-MA2.....4
2. About this Document .....4
3. Terminology .....4

### **Chapter 1** ----- Prepare Before Use      5

1. Operation Environment.....5
2. Setup .....5

### **Chapter 2** ----- Basic Usage    6

1. Preparation of WAVE data .....6
2. Starting of WSC-MA2 .....6
3. Creates SMAF.....6
- Step 1**.....6
- Step 2**.....7
- Step 3**.....7

### **Chapter 3** ----- Detailed Function      8

1. Main Dialog .....8
2. Option Setting Dialog .....8
3. Message Dialog.....9
4. Version Information Dialog .....10

### **Appendix**11

1. Error Message and Its Measures .....11
2. FAQ.....12

<<Revision>>

Ver	Date	Description
1.0.0	2002/12/18	Newly released
1.1.0	2003/02/18	Description about the maximum size of input WAVE file was corrected.
2.0.0	2004/05/31	WAV file format was expanded AIFF format data was corresponded. Setup item of Save Enable Flag was added. Corrected so that SMAF is outputted in the play time limitation. Windows® 98SE was excepted from the candidate for support.

- Copyright of this document is the property of YAMAHA Corporation.
- Transfer or copying of this document in part or in whole requires the permission of Yamaha Corporation.
- The contents of this document are subject to change without notice.

# Introduction ----- About WSC-MA2

## 1. Outline of WSC-MA2

WSC-MA2 is an application software that creates “Synthetic music Mobile Application Format” (SMAF) from the existing WAVE data (WAV/AIFF).

By using WSC-MA2, you can create your original ringing melody easily for mobile phone from WAVE data.

## 2. About this Document

This document is a Users manual for WSC-MA2. This describes the setup of WSC-MA2, the basic usage and the guideline for creating SMAF etc.

This configuration is as follows. Please read from chapter that you need.

**Setup Method** -----→ Chapter 1 [Prepare Before Use](#)

**Try to Use** -----→ Chapter 2 [Basic Usage](#)

**Detailed Usage** -----→ Chapter 3 [Detailed Functions](#)

## 3. Terminology

File Name	Meaning
SMAF	Synthetic Music Mobile Application Format.
WAVE	In this document, it indicates wave data such as WAV or AIFF.
WAV	Microsoft WAV form audio data.
AIFF	Apple AIFF form audio data.

# Chapter 1 ----- Prepare Before Use

Explains the required preparation before you use WSC-MA2.

## 1. Operation Environment

WSC-MA2 operates in the following environment.

<b>OS</b>	Windows® 2000 or Windows® XP
<b>CPU</b>	Celeron® 400MHz or more, or its compatible processor
<b>Memory</b>	64MB or more
<b>Hard disk</b>	More than 10MB

## 2. Setup

The installer program is not included in WSC-MA2. Please uncompress the acquired file to a suitable place. The uncompressed folder includes this manual and execute file.

## Chapter 2 ----- Basic Usage

The ringing melody for mobile phone can be created easily if you use WSC-MA2. Here, describes the actual flow, using example.

### 1. Preparation of WAVE data

In order to create SMAF by using WSC-MA2, it is necessary to prepare WAV file (\*.wav) or AIFF file (\*.aif) which fulfills the following conditions.

Format	: PCM
Sampling Frequency	: 4kHz to 48kHz
Number of Quantization Bit	: 8bit or 16bit
Number of Channel	: 1(monophonic) or 2(stereo)

WSC-MA2 can handle WAVE data whose play time is 66 seconds or less. When WAVE data which has longer play time was inputted, the data from the top to about 66seconds is outputted into SMAF.

### 2. Starting of WSC-MA2



Double-click EXE file or its shortcut icon.

**NOTE!!**

It can also start from “Run” (Type the name of a program) and command prompt.

### 3. Creates SMAF

#### Step 1



Drag and drop WAVE data to the displayed main dialog after start. Here, an example shows procedure of creating SMAF from a file “CoolGuitar.wav”.

## Step 2

If WAVE data has no problem, then, “Information setting dialog” appears. In the initial state, the character string which removes extension from the input file name is inputted as title. Press the “OK” button, here.



## Step 3



At the end of conversion a message dialog appears and notifies the size of SMAF file. SMAF file “CoolGuitar.mmf” is created in the same folder as original WAVE data.

### NOTE!!

SMAF created by WSC-MA2 can be played on your mobile phone by transferring.

It is also possible to play on your computer by using tools such as ATS-MA2-SMAF, ATS-MA3-SMAF, or MidRadio which you can download from [SMAF GLOBAL](http://www.smaf-global.com) web site.

As things mentioned above, the operation flow of WSC-MA2 was explained. The general WAVE data can be converted with same method. However, please pay attention to the following two points to create SMAF smoothly.

### ✓ *Does the WAVE data file fulfill the specified requirements?*

The WAVE data, which does not fulfill the requirements shown in ”[Preparation of WAVE data](#)”, cannot be converted by WSC-MA2. It is necessary to change the format by WAVE file edit software beforehand.

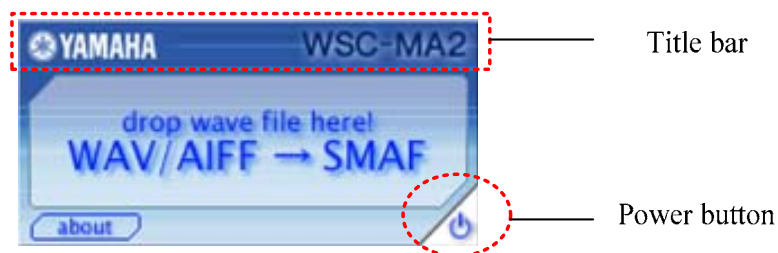
### ✓ *Please confirm the maximum file size which can be played on your mobile phone.*

The upper limit of playable file size differs according to Carriers or mobile phone. Therefore, even if the SMAF is created from WAVE data which fulfilled the specified requirements, the file may not be able to be transferred to the mobile phones. Or even if the file can be transferred, it may be unable to be played. If the size exceeds your phone specification, please make its size smaller by adjusting the length of original WAVE data and down sampling.

## Chapter 3 ----- Detailed Function

The basic operation method and its flow were explained in Chapter 2. The details of specification and function of individual dialog that constitute WSC-MA2 are described here.

### 1. Main Dialog



This dialog is displayed first after the start of WSC-MA2.

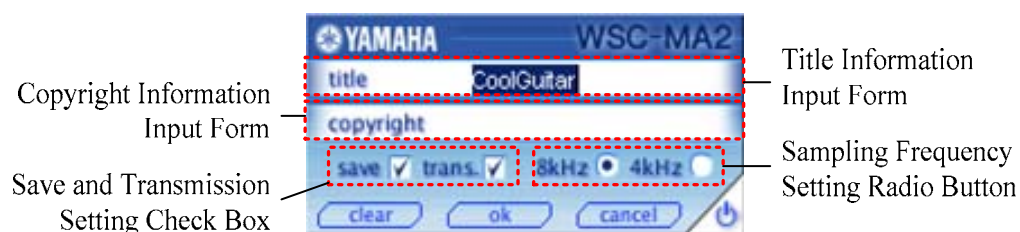
WAVE data can be input by dropping on the icon.

From the “about” button, the Version information dialog can be called.

And, the common functions for all dialogs are as follows.

- ☐ Can move the dialog by dragging Title bar.
- ☐ Can end WSC-MA2 by power button.

### 2. Option Setting Dialog



When the WAVE, file which is dropped on the main dialog, fulfills the conversion requirement, it is displayed. In this dialog, you can edit various option information which to be included in SMAF.



☐ **Title Information Input Form**

Input the title information to add to SMAF. In the initial condition, the character string which except the extension from the input file name is set.

☐ **Copyright Information Input Form**

Input the copyright information to add to SMAF.

☐ **Copy Status Setting Check Box**

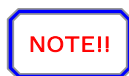
save : determines whether saving to mobile phone is restricted. When checked, saving is enabled.

trans. : determines whether secondary transmission from mobile phone to mobile phone is restricted. When checked, transmission is enabled.

☐ **Sampling Frequency Setting Radio Button**

Set the sampling frequency at the time of storing WAVE data into SMAF.

Items to set differ according to the inputted WAVE data.



Commonly, when down the sampling frequency, the data size becomes small but its sound quality is lost.

When you press the “clear” button, the inputted information of edit box is cleared.

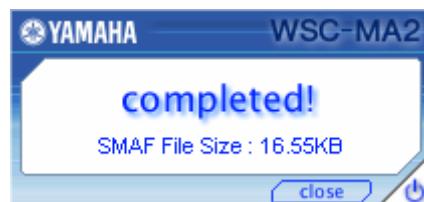
When you press the “ok” button, the input information is fixed and conversion processing into SMAF starts.

When you press the “cancel” button, the input information is canceled and it returns to the main dialog.

### 3. Message Dialog

2 kinds of message dialog exist according to the displayed situation.

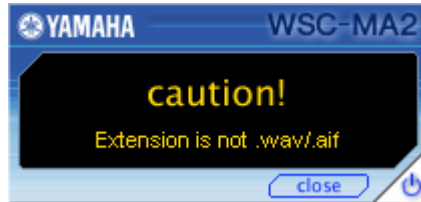
☐ **Complete Message**



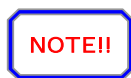
Informs that the conversion was completed normally.

And the outputted SMAF size is displayed.

□ **Error Message**



When an error occurs in the process, the error message is displayed. The above image is an example that has problem in the inputted WAVE data.



Refer to “[Error Message and Its measures](#)” of Appendix for the details and measure of the displayed error message.

In each case, when you press the “close” button, it returns to the main dialog.

#### 4. Version Information Dialog



The version of WSC-MA2 can be confirmed. And when you click the URL written by blue colored, [SMAF GLOBAL](http://smaf-yamaha.com) is opened.

When you press the “close” button, it returns to the main dialog.

# Appendix

It describes that convenient information for using WSC-MA2 if you know it.

## 1. Error Message and Its Measures

If the error occurs on the way of conversion, the following messages are displayed.

Error message	The cause and measure
Cannot open WAV / AIFF file	The read of its WAVE data is not permitted or it is used already on the other application software. Please confirm the file attribute and check whether other application is using the WAVE data.
Extension is not .wav / .aif	Didn't you input a file except WAV/AIFF? Is the extension of the file correct? Please confirm the inputted file name.
File name length exceeds limit	The number of character of the inputted file absolute path exceeds the limit. Please replace the file to upper folder, or shorten the name of the folder and the file.
Audio format not supported	The inputted WAVE data is neither WAV nor AIFF.
Sampling Frequency not supported Bits per sample not supported Channel count not supported	The inputted WAVE data does not fulfill the conversion requirement. Confirm the format by referring Chapter 2 " <a href="#">Preparation of WAVE data</a> ".
Inadequate playtime	WSC-MA2 cannot handle the WAV file whose replay time is less than 20msec. Please prepare the file whose playback time should be longer than 20msec.
Cannot save to SMAF file	The file of same name may exist in the state of read only. Or the write to folder may not be permitted. Please confirm the attribute of folder and file.
Disk space not enough	Converted data can not be saved because disk capacity is insufficient.

## 2. FAQ

**Q** I dropped some WAVE data to WSC-MA2, but only one SMAF can be created.

**A** Only one WAVE data can be inputted at one time. When you select and drop two or more files, only one file, which is under the mouse cursor, becomes the target of conversion. When you would like to create some SMAF, it is necessary to convert WAVE files one by one.

**Q** I created the new SMAF file, but file created before cannot be seen.

**A** The outputted file name of SMAF file becomes the same, but the extension of WAVE data is replaced to “.mmf”. When the SMAF file of same name has already existed, it is overwritten and saved. Therefore, about the important SMAF, it is necessary to change that name or move to another folder beforehand.

**Q** The characters overflow the window and its layout looks worse.

**A** Please set the font size to “small font” from the property of window. It cannot be displayed nicely by the font size excepting “Normal size (96dpi)”.